

Miracle Pro Green Machine

Model MJ575

Wheat Grass Juicer



Directions for Use

**READ, FOLLOW AND SAVE ALL INSTRUCTIONS AND SAFEGUARDS FOR
OPTIMUM PERFORMANCE OF YOUR**

MIRACLE PRO GREEN MACHINE WHEAT GRASS JUICER

GENERAL DESCRIPTION

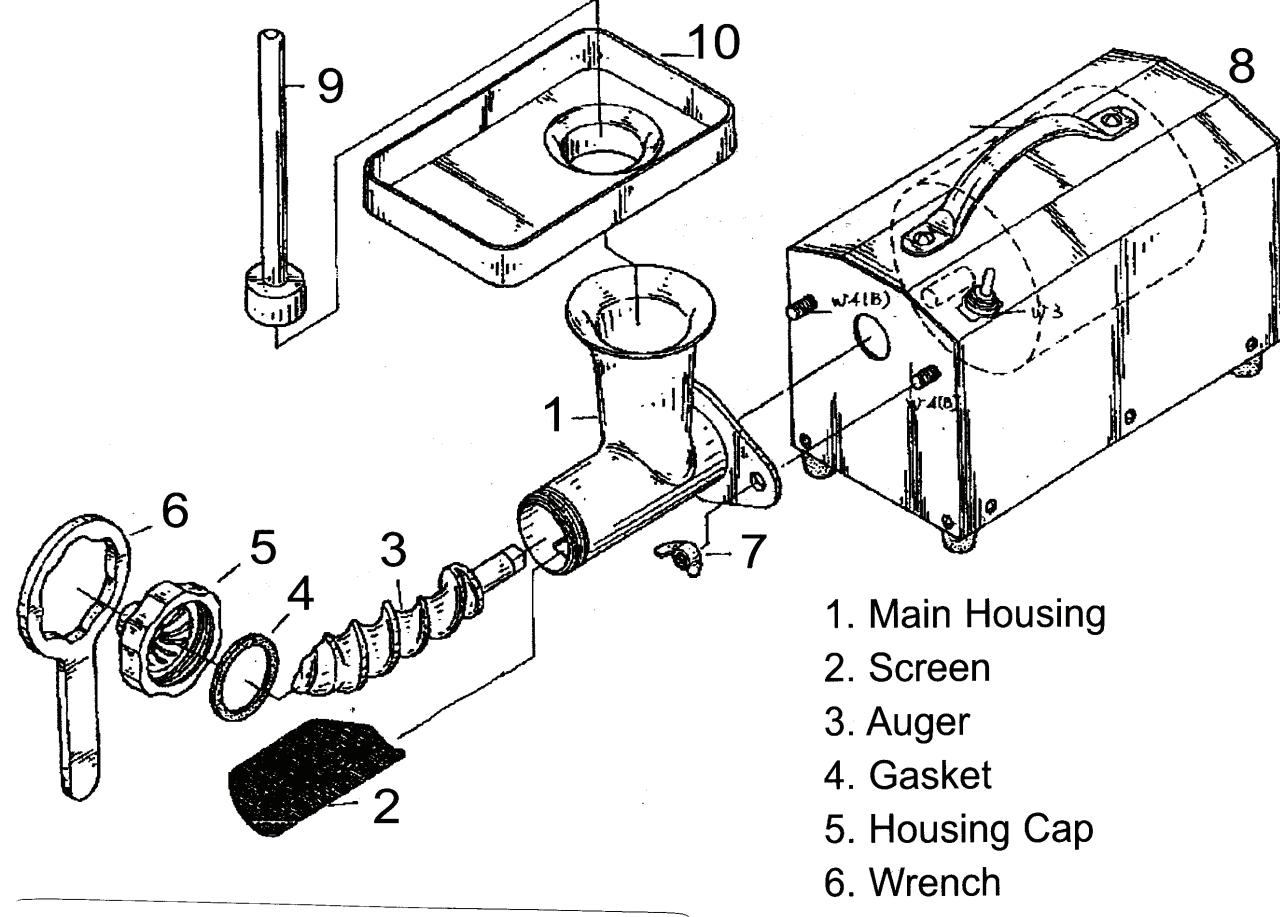
Juicer model MJ575 is a practical, commercial grade, low maintenance appliance which extracts juice from wheat grass and other leafy greens. It can also extract juice from soft fruits including currants, berries, grapes, tomatoes, etc.

Operating the appliance is easy, and other than keeping it clean, there is no need for special maintenance.

The elements that touch food are made of stainless steel for purity and durability.

CONSTRUCTION

A complete unit consists of:



CAUTION:
"HOUSING CAP" (PART #5)
UNSCREWS COUNTERCLOCKWISE

1. Main Housing
2. Screen
3. Auger
4. Gasket
5. Housing Cap
6. Wrench
7. Wing Nuts (2)
8. Motor Base
9. Pusher
10. Tray

ASSEMBLING

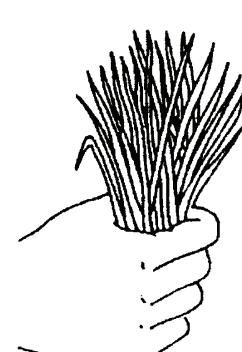
Wash and dry all juicing parts prior to use, and disconnect power cord from power when assembling or disassembling. The Miracle Pro Green Machine wheat grass juicer is assembled in the following order:

- The screen (#2) must be inserted, tapered end first, into the main housing (#1) for juicing wheat grass or leafy greens.
- Insert the auger (#3) into the main housing (#1) with its square drive-base protruding through the back opening of the main housing.
- With gasket (#4) inserted, fasten the housing cap (#5) to the main housing (#1) by hand, turning it counter-clockwise. The wrench (#6) need not be used to tighten the cap, but may be helpful to loosen the cap for disassembly when juicing is completed.
- Join the main housing to the motor base, pre-aligning by hand the square drive base of the auger (#3) to fit into the drive gear in the motor base. Fit the two holes on the back plate of the main housing (#1) over the corresponding screw supports on the motor base (#8).
- Screw the two wing nuts (#7) onto the two screw supports of the motor base (#8) and tighten by hand.
- Snap the tray (#10) onto the top opening of the main housing (#1).
- The juice drains out through the screened opening in the underside of the main housing for collection into a container. A second container should be placed under the nose of the main housing to catch the ejected waste pulp.

OPERATING

Plug in the power cord and throw the "on" switch forward, toward the main housing. If the "on" switch is thrown towards the rear of the motor base, the auger will rotate in the reverse direction. This is useful to clear material from the main housing, but juice will only be produced when the switch is in the forward position. Feed the produce to be juiced into the top opening of the main housing, using the pusher (#10) if necessary. When juicing wheat grass, cut the grass and keep in bunches of parallel shoots, like spaghetti, 1" to 2" round. Depending on the quality of the grass, a 1" round bunch will yield about one ounce of juice. Wheat grass juice should be consumed immediately after juicing.

After use, dismantle the juicer, wash all juicing parts in the main housing and dry thoroughly. Wipe off the motor housing with damp cloth, if necessary, and dry.



IMPORTANT SAFEGUARDS

- Do not immerse the motor base in water or other liquid.
- Close supervision is necessary when any appliance is used by or near children.
- Unplug the juicer from the outlet when not in use, before putting on or taking off parts and before cleaning.
- Avoid contact with moving parts.
- Do not operate any appliance with a damaged cord or plug or after it has been dropped or damaged in any manner. Return the appliance to an authorized service facility for examination, repair or adjustment.
- The use of attachments not recommended by the manufacturer may cause fire, electric shock or injury.
- Do not use this unit outdoors.
- Do not permit the cord to hang over the edge of a table or counter or to touch hot surfaces.
- Make sure that the parts of the juicer are locked securely in place before the motor is turned on. Do not loosen the wing nuts or housing cap while the juicer is operating.
- Be sure that the switch is in the "off" position after each use. Make sure the motor stops completely before disassembling.
- Do not put your fingers or other objects into the juicer opening while in operation. If food is lodged in the opening, use the pusher or another piece of food to push it down. If this does not work, throw the power switch to the reverse direction. Unplug the unit before disassembling the juicer to remove any remaining food.
- Any other servicing except cleaning and user maintenance which is specified in this manual should be performed by authorized service personnel.

TECHNICAL DATA

Power supply	110 V AC 50Hz to 60Hz
Power input under load	75W
Rated speed	53 rpm
Torque	183 lbs /cm
Insulation class	E
Radio interference level	Undetectable
Weight	20.25 lbs

Made in Taiwan



juicernet
by Mulligan Associates Inc
1-800-627-2886